

1. Swamp Buggy Dock
2. Restroom & Shower Facilities
3. Gator Exhibit
4. Swamp Water Café
5. Big Cypress Casino
6. Traditional Seminole Village

7. Dugout Canoe Exhibit
8. Cook Chickee
9. Seminole Crafts
10. Butterfly Garden
11. Gift Shop/Ticket Sales
12. Family Style Chickee Huts
13. Airboat Dock

14. Snake Show
15. Alligator Pit
16. Panther Exhibit
17. Fort Critter Show
18. Classic Chickee Huts
19. Nature Boardwalk
20. VIP Cabin



Plants and Animals Found in the Florida Everglades *and their common uses by the Florida Seminoles*



Bald Cypress Tree
Dug Out Canoes



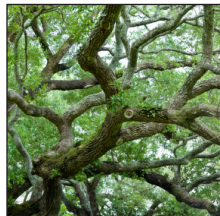
Florida Black Bear
Clan Animal



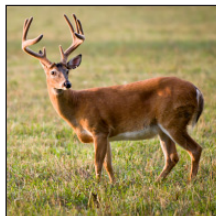
Saw Palmetto
Chickee Roof Thatch



Cattle Egret
Clan Animal



Live Oak
Cooking



White Tailed Deer
Clan Animal



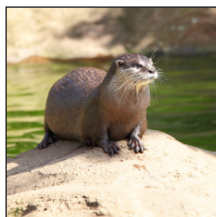
Alligator
Food, Wrestling, Hides



Gopher Tortoise
Food Source, Dance Shakers



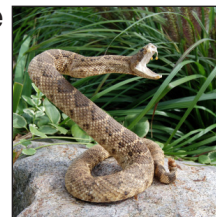
Gar Fish
Food Source



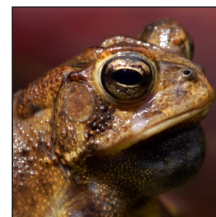
Otter
Clan Animal



Florida Panther
Clan Animal



Rattle Snake
Clan Animal



Southern Toad
Clan Animal

In the war days, one Seminole family had its camp on one of a series of lakes that fed into a river not far from here. One day, down at the river not far from camp, some of the women were washing themselves and a few men were nearby guarding them, when white soldiers surprised them. The people ran away as fast as they could. They ran hard through the woods but the soldiers followed them, shooting at the men until they nearly killed several and caught one. Eventually, he was forced to lead them back to his camp. But his people were watching, and they began to run away again through the swamps. One young woman, seeing her people fleeing for their lives, turned to the oncoming soldiers and offered the only thing she had, herself, to stop them and give the people time to get away. "Kiss me! Kiss me! Soldier, come," she cried out. But in her few and broken words of English, the desperate invitation came out "Kissimmee! Kissimmee!" Her people made good in their escape as one brave young woman paid the price for their freedom. Sometime later, she caught up with them, deep in the Everglades, in the area that is still known today as Kissimmee Billie Strand. And Billie Swamp Safari commemorates her courage and that of all Seminoles who fought and died in Florida.



Seminole Clans

Each Seminole Indian child born of a Seminole mother is a member of her "Clan" - a traditional extended family unit. Husbands traditionally went to live in the wife's clan camp. Each clan is characterized by a non-human entity with which it shares many traits, such as strength, courage, and endurance. There are eight Seminole clans: Panther, Bear, Deer, Wind, Bigtown, Bird, Snake, and Otter. Clan members are not supposed to marry within their clan. The Panther clan is the largest clan in today's Seminole Tribe of Florida.